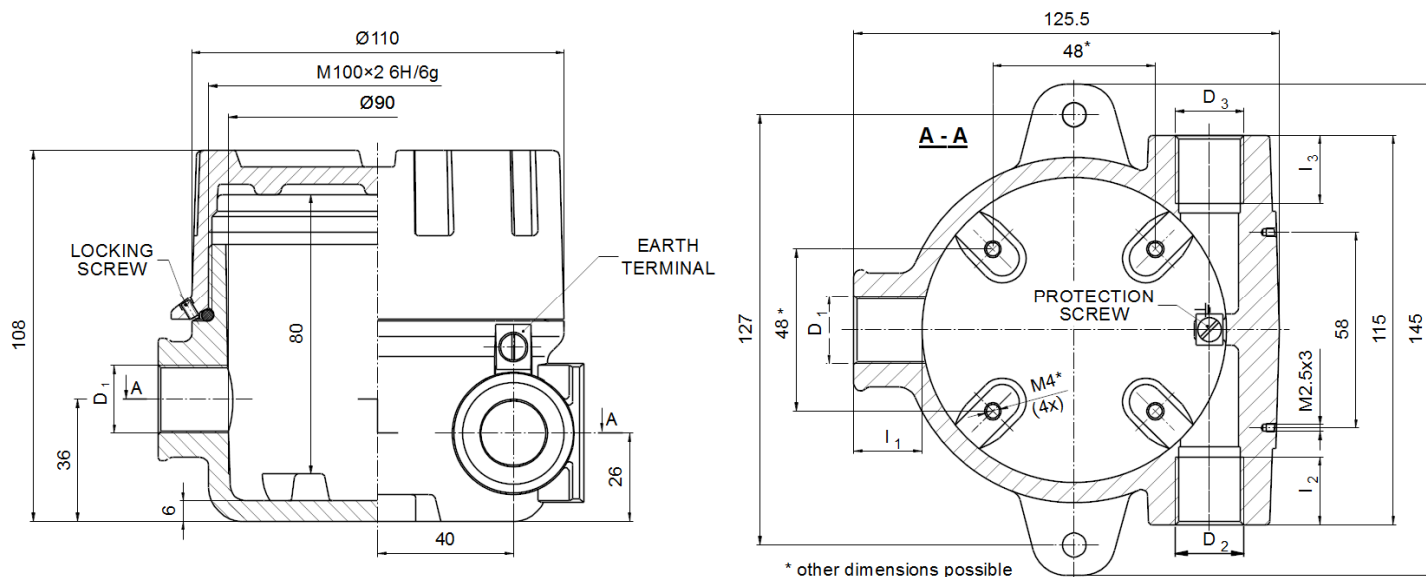


## INSTRUMENT HOUSING – type XD-I



**Material of body and cover:** aluminium pressure die-casting

**Service temperature:**  $T_{serv} = -40 \div 212^{\circ}\text{F} / -40 \div 100^{\circ}\text{C}$  (185°F / 85°C with window) – silicone VMQ rubber

**Coating:** yellow chromating and chemically resistant paint (outside only)

THREAD $D_3$	$I_3$ [mm]	THREAD $D_2$	$I_2$ [mm]	THREAD $D_1$	$I_1$ [mm]	SEAL MATERIAL	COATING
M20x1.5 M24x1.5 M25x1.5	20	M20x1.5 M24x1.5 M25x1.5	20	M20x1.5 M24x1.5 M25x1.5 M27x2	20	4	SE
½ NPT mod ¾ NPT mod	16	½ NPT mod ¾ NPT mod	16	½ NPT mod ¾ NPT mod	16		Cal SPU PPU P
PD		PD		PD			

### PROTECTION CONCEPT

Protection method	Type of protection	Marking	Permitted use	Approval Body	Certificate No.	Protection Principle
FM 3615	Explosionproof	Class I, Groups A,B,C,D Class II, Groups E,F,G; Class III Enclosure type: 4x	Division 1 Division 2	FM Approvals	FM18US0036U	Contain the explosion and quench the flame
CSA C22.2 No.30 <sup>(1)</sup>				CSA	1717515	
ANSI/ISA 60079-1	Flameproof	Class I, Zone 1, AEx db II C, IP66	Zone 1	FM Approvals	FM18US0036U	
CSA C22.2 E60079-1		Ex db II C, Class I, Zone 1, IP66		CSA	1717515	

<sup>(1)</sup> NPT threads only in all openings for CSA Division

## ORDERING

<b>XD-I... - .</b> - <b>.. / ..</b> - <b>.. / ..</b> - <b>.. / ..</b> - <b>. .</b>	
<b>Type of instrument housing</b>	
<b>Version of instrument housing</b> = standard <b>win</b> = cover with window <b>Lwin</b> = low cover with window <b>C</b> = without lugs <b>Cwin</b> = without lugs, cover with window <b>CLwin</b> = without lugs, low cover with window	
<b>Material of seal</b> 4 = VMQ rubber	
<b>Symbol of conduit thread D<sub>3</sub> - D<sub>2</sub></b> Standard: M2 = M20x1.5 N2 = 1/2 NPTmod – modified +1/2 to +1 thread depper N3 = 3/4 NPTmod – modified +1/2 to +1 thread depper On request: M24 = M24x1.5 M25 = M25x1.5 PD = plugged <b>Notice:</b> Type: “size of thread / PD” if thread is plugged, e.g. <b>M2/PD</b> , etc.	
<b>Symbol of process thread D<sub>1</sub></b> Standard: M25 = M25x1.5 N2 = 1/2 NPTmod – modified +1/2 to +1 thread depper N3 = 3/4 NPTmod – modified +1/2 to +1 thread depper On request: M2 = M20x1.5 M24 = M24x1.5 M27 = M27x2 PD = plugged <b>Notice:</b> Type: “size of thread / PD” if thread is plugged e.g. <b>M2/PD</b> , etc.	
<b>Symbol of paint type</b> SE – spray epoxy – <u>standard</u> ; SPU – spray polyurethane (on se layer); C – creodur; PPU – polyurethane powder; P – polyester powder	
<b>Symbol of paint colour</b> <b>sh</b> = RAL 9006 shine – <u>standard</u> ; <b>yc</b> = RAL 1007 yellow chromic; <b>ys</b> = RAL 1003 yellow signaling; <b>bs</b> = RAL 5005 blue signaling; <b>sb</b> = RAL 5015 sky-blue; <b>sg</b> = RAL 7032 silicon-grey; <b>gr</b> = RAL 7035 grey; <b>ag</b> = RAL 9002 ashen grey-white; <b>gs</b> = RAL 9007 grey-silver; <b>cw</b> = RAL 9010 cream-white; <b>al</b> = alu natural colour (for C paint type only)	

## STANDARD PRODUCTS:



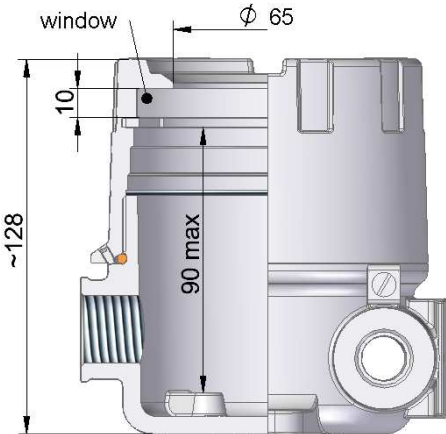
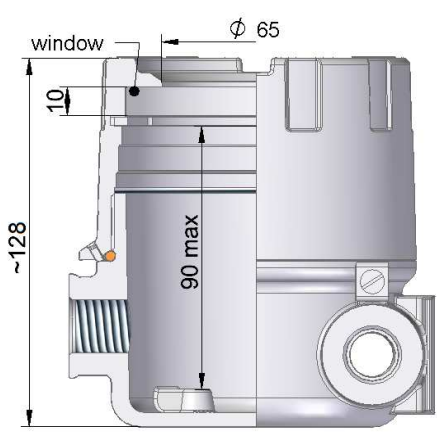
**XD-I4-D<sub>3</sub>-D<sub>2</sub>-D<sub>1</sub>-SEsh**

Sample:

XD-I4-M2-M2-M25-SEsh

XD-Iwin-4-N3/PD-N3-N3-SEsh

PROTECTION AGAINST WATER and DUST INGRESS (Enclosure Type NEMA 4X)		
	IP	D <sub>3</sub> , D <sub>2</sub> , D <sub>1</sub>
NO	54	threaded connection without additional sealing
YES	66	threaded connection with additional sealing

	XD-I standard body	XD-IC version body
Standard cover		
win version cover		
Lwin version cover	