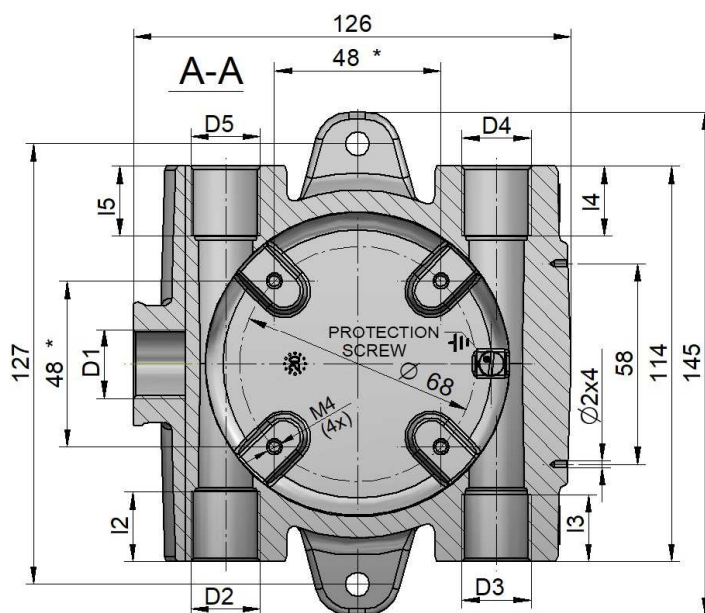
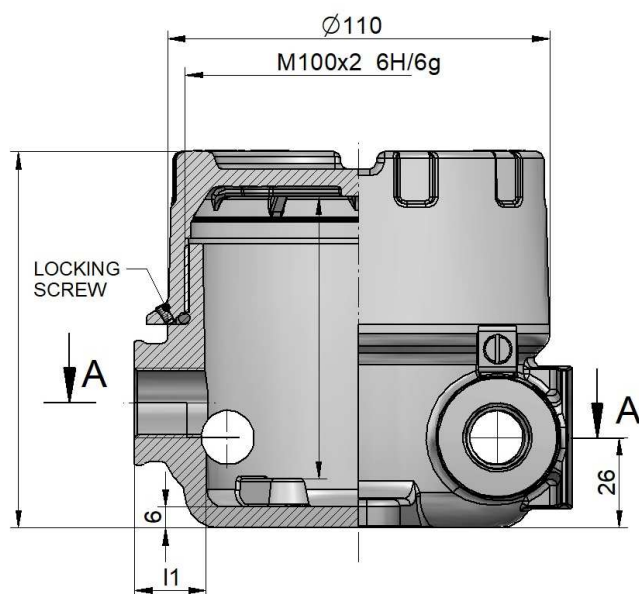
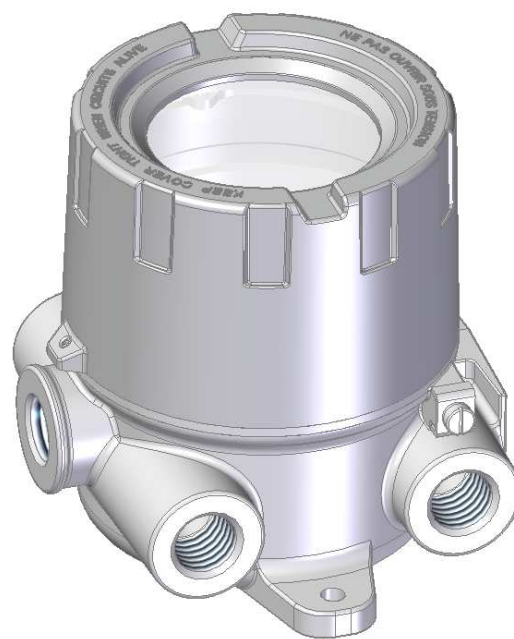
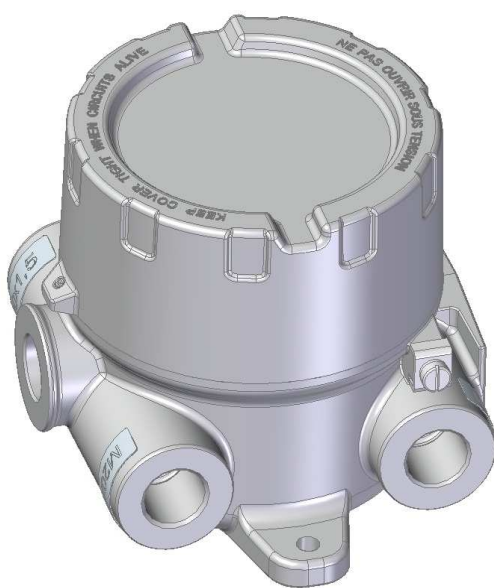


## INSTRUMENT HOUSING – type XD-FI



\* - other dimensions possible



**Material of body and cover:** aluminium pressure die-casting

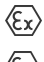

**Service temperature:**  $T_{amb} = -40 \div 100^{\circ}\text{C}$  ( $-40 \div 100^{\circ}\text{C}$  with window) – oil proof rubber

$T_{amb} = -60 \div 150^{\circ}\text{C}$  ( $-50 \div 100^{\circ}\text{C}$  with window) – silicone rubber

$T_{amb} = -20 \div 200^{\circ}\text{C}$  ( $-20 \div 100^{\circ}\text{C}$  with window) – FKM rubber

**Coating:** yellow chromating and chemically resistant paint (outside only)

THREAD D <sub>5</sub>	I <sub>5</sub> [mm]	THREAD D <sub>4</sub>	I <sub>4</sub> [mm]	THREAD D <sub>3</sub>	I <sub>3</sub> [mm]	THREAD D <sub>2</sub>	I <sub>2</sub> [mm]	THREAD D <sub>1</sub>	I <sub>1</sub> [mm]	SEAL MATERIAL	COATING
M20×1.5 M24×1.5 M25×1.5	20	M20×1.5 M24×1.5 M25×1.5	20	M20×1.5 M24×1.5 M25×1.5	20	M20×1.5 M24×1.5 M25×1.5	20	M20×1.5 M24×1.5 M25×1.5 M27×2	20	TPE VMQ FKM	SE Cal SPU
½ NPT mod ¾ NPT mod	16	½ NPT mod ¾ NPT mod	16	½ NPT mod ¾ NPT mod	16	½ NPT mod ¾ NPT mod	16	½ NPT mod ¾ NPT mod	16		
PD		PD		PD		PD		PD			

Type of protection		Permitted use	Certificate No.	Protection principle
IECEx marking	ATEX marking			
Ex db IIC Gb	1026  II2G Ex db IIC Gb	Zone 1, Zone 2 Zone 21, Zone 22	FTZU 21 ATEX 0016U IECEx FTZU 21.0002U	Contain the explosion and quench the flame
Ex tb IIIC Db	1026  II2D Ex tb IIIC Db			

## ORDERING

**XD-FI... - .** - **.. / ..** - **.. / ..** - **.. / ..** - **.. / ..** - **.. / ..** - **.. / ..** - **..**

**Type of instrument housing**

**Version of instrument housing**  
 = standard  
**H** = high cover  
**win** = cover with window  
**Lwin** = low cover with window  
**Hwin** = high cover with window

**Material of seal**  
 3 = TPE rubber  
 4 = VMQ rubber  
 5 = FKM rubber

**Symbol of conduit thread D<sub>5</sub> - D<sub>4</sub> - D<sub>3</sub> - D<sub>2</sub>**  
 Standard: M2 = M20×1.5  
 N2 = ½ NPTmod – modified +1/2 to +1 thread deeper  
 N3 = ¾ NPTmod – modified +1/2 to +1 thread deeper  
 On request: M24 = M24×1.5  
 M25 = M25×1.5  
 PD = plugged  
**Notice:**  
 Type: "size of thread / PD" if thread is plugged, e.g. **M2/PD**, etc.

**Symbol of process thread D<sub>1</sub>**  
 Standard: M25 = M25×1.5  
 N3 = ¾ NPTmod – modified +1/2 to +1 thread deeper  
 On request: M2 = M20×1.5  
 M24 = M24×1.5  
 M27 = M27×2  
 N2 = ½ NPTmod – modified +1/2 to +1 thread deeper  
 PD = plugged  
**Notice:**  
 Type: "size of thread / PD" if thread is plugged ex. **M2/PD**, etc.

**Symbol of paint type**  
 SE – spray epoxy – standard; SPU – spray polyurethane (on se layer); C – creodur

**Paint colour**  
 RAL 9006, RAL 5005, RAL 5015, RAL 7032, RAL 9002, RAL 9007, RAL 1007 RAL 1003, RAL 7035, RAL 9010  
 al = alu natural colour (for C paint type only)

## STANDARD PRODUCT:

**XD-FI4-D<sub>5</sub>-D<sub>4</sub>-D<sub>3</sub>-D<sub>2</sub>-D<sub>1</sub>-SE RAL9006**

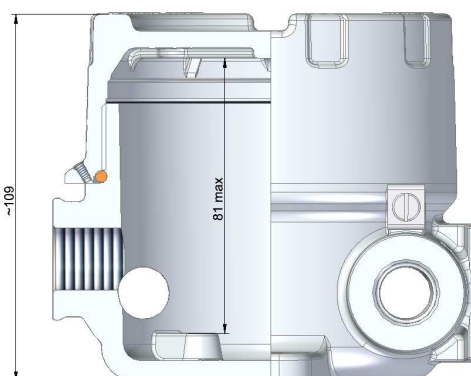
Sample:

XD-FI4-M2-M2-M2-M2-M25-SE RAL9006

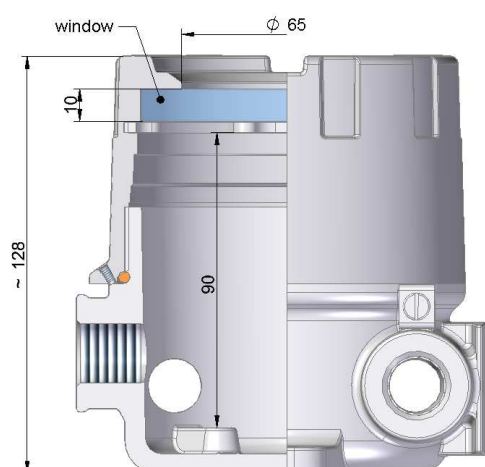
XD-FIwin-4-N3-N3-N3/PD-N3-N3-SE RAL9006

PROTECTION DEGREE	
IP	D <sub>5</sub> , D <sub>4</sub> , D <sub>3</sub> , D <sub>2</sub> , D <sub>1</sub>
54	threaded connection without additional sealing
68	threaded connection with additional sealing

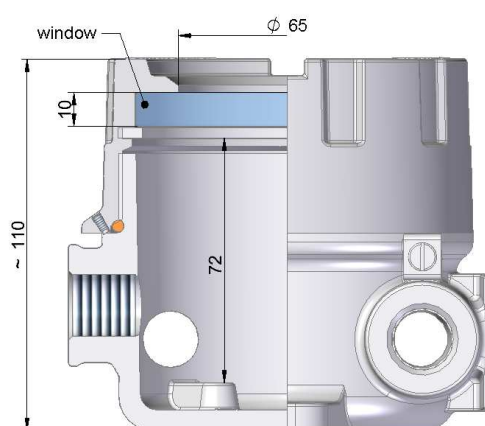
**XD-FI**



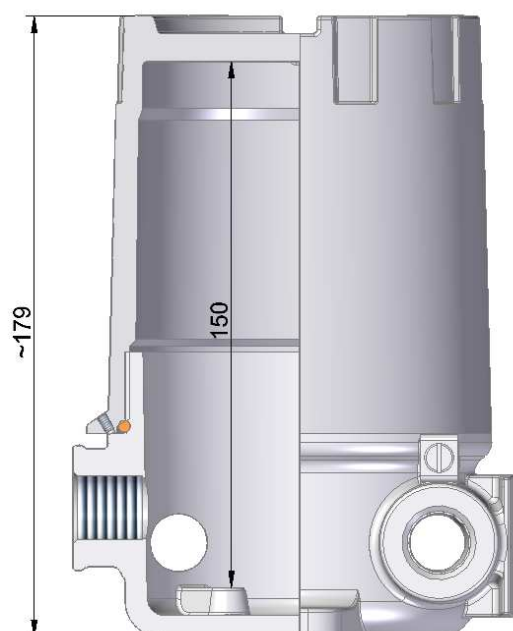
**XD-FIwin**



**XD-FILwin**



**XD-FIH**



**XD-FIHwin**

