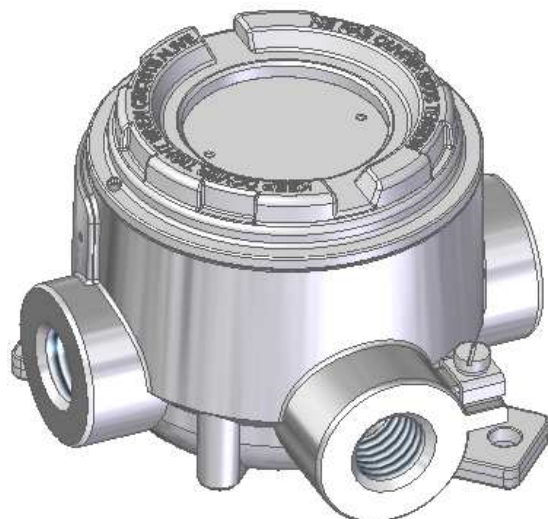
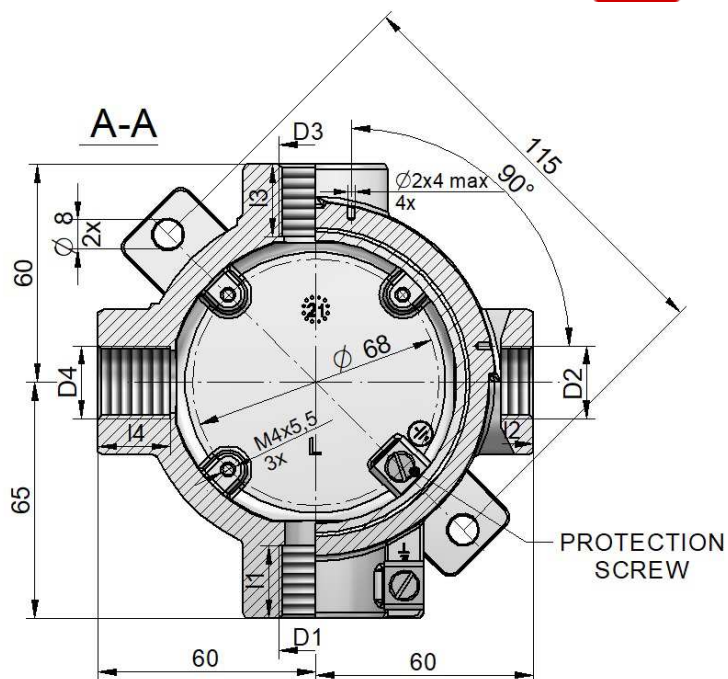
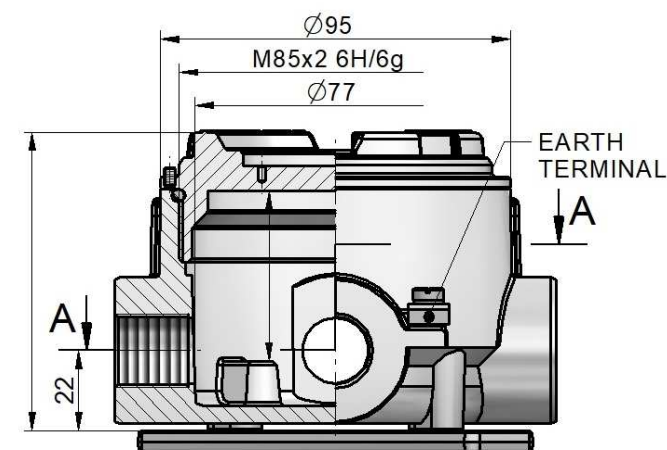
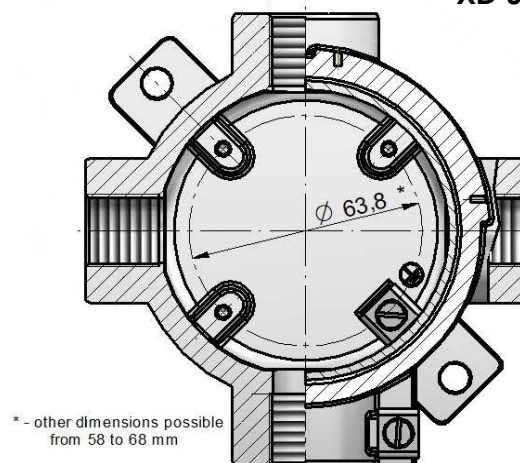


## UNIVERSAL BOX – type XD-JB85



XD-JB85I



**Material of body and cover:** aluminium pressure die-casting

**Servis temperature:**  $T_{serv} = -40 \div 100^{\circ}\text{C}$  (85°C with window) – oil-proof TPE rubber

$T_{serv} = -40 \div 150^{\circ}\text{C}$  (85°C with window) – silicone VMQ rubber

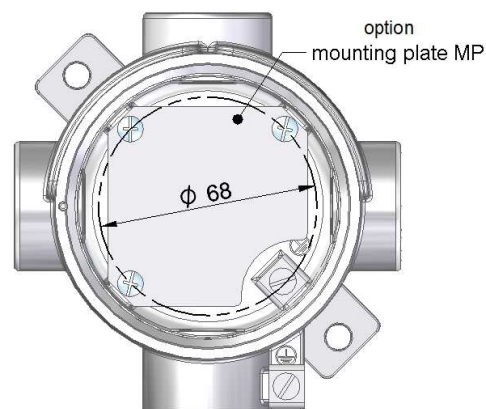
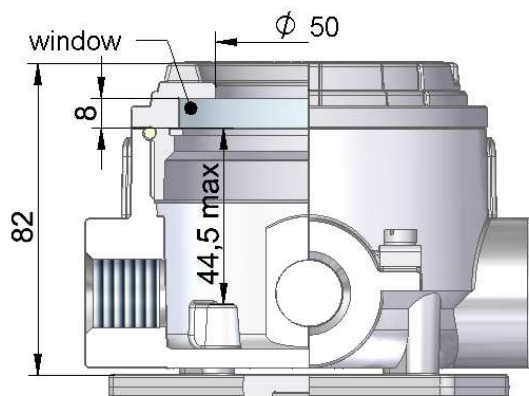
$T_{serv} = -20 \div 200^{\circ}\text{C}$  (85°C with window) – FKM rubber

**Coating:** chromating and chemically resistant paint (outside only)

| THREAD $D_4$                           | $l_4$ [mm] | THREAD $D_3$                           | $l_3$ [mm] | THREAD $D_2$                           | $l_2$ [mm] | THREAD $D_1$                           | $l_1$ [mm] | SEAL MATERIAL     | COATING               |
|----------------------------------------|------------|----------------------------------------|------------|----------------------------------------|------------|----------------------------------------|------------|-------------------|-----------------------|
| M20x1.5<br>M24x1.5<br>M25x1.5<br>M27x2 | 20         | M20x1.5<br>M24x1.5<br>M25x1.5<br>M27x2 | 20         | M20x1.5<br>M24x1.5<br>M25x1.5<br>M27x2 | 20         | M20x1.5<br>M24x1.5<br>M25x1.5<br>M27x2 | 20         | TPE<br>VMQ<br>FKM | SE<br>Cal<br>SPU<br>P |
| ½ NPTmod<br>¾ NPTmod                   | 16,2       | ½ NPTmod<br>¾ NPTmod                   | 16,2       | ½ NPTmod<br>¾ NPTmod                   | 16,2       | ½ NPTmod<br>¾ NPTmod                   | 16,2       |                   |                       |
| CD<br>PD                               |            | CD<br>PD                               |            | CD<br>PD                               |            | CD<br>PD                               |            |                   |                       |

### PROTECTION CONCEPT

| Type of protection                                    |                               | Permitted use                      | Certificate No.                           | Protection Principle                          |
|-------------------------------------------------------|-------------------------------|------------------------------------|-------------------------------------------|-----------------------------------------------|
| ATEX Marking                                          | IECEx Marking                 |                                    |                                           |                                               |
| 1026  II 2G Ex db IIC Gb<br>1026  II 2D Ex tb IIIC Db | Ex db IIC Gb<br>Ex tb IIIC Db | Zone 1, Zone 2<br>Zone 21, Zone 22 | FTZU 05 ATEX 0262U<br>IECEx FTZU 09.0028U | Contain the explosion<br>and quench the flame |

**XD-JB85win****ORDERING**

**XD-JB85. - . - .. / .. - .. / .. - .. / .. - .. / .. - . . + . .**

**Type of Box****Version of Box**

= standard  
**win** = cover with window  
**l** = holes spacing 58  
**lwin** = holes spacing 58  
 and cover with window

**Symbol of seal material**

0 = TPE rubber, without chromating      3 = TPE rubber  
 4 = VMQ rubber      5 = FKM rubber

**Symbol of tread  $D_4 - D_3 - D_2 - D_1$** 

M2 = M20x1,5      N2 = 1/2 NPTmod – modified +1/2 to +1 thread deeper  
 M24 = M24x1.5      N3 = 3/4 NPTmod – modified +1/2 to +1 thread deeper  
 M25 = M25x1.5      PD = plugged  
 M27 = M27x2      CD = closed

**Notice:**

Type: "size of thread / PD" if thread is plugged, eg. **M2/PD**, **N3/PD**, etc.  
 Type: "CD" if opening is closed, eg. **XD-JB85-4-CD-CD-M2....**, etc.

**Symbol of paint type**

SE – spray epoxy – standard; SPU – spray polyurethane (on se layer); C – creodur; P – polyester powder

**Symbol of paint colour:**

RAL 9006, RAL 5005, RAL 5015, RAL 7032, RAL 9002, RAL 9007, RAL 1007 RAL 1003, RAL 7035, RAL 9010  
**al** = alu natural colour (for C paint type only)

**Symbol of mounting plate (only for XD-JB85, XD-JB85win)**

MP – mounting plate

**Standard products:**

**XD-JB85-4-D<sub>4</sub>-D<sub>3</sub>-D<sub>2</sub>-D<sub>1</sub>-SE RAL9006**

**Sample:**

XD-JB85-4-M2-M2-M2-M25-SE RAL9006

XD-JB85win-4-M2/PD-M2-M2-M25-SE RAL9006 + MP

XD-JB85win-5-CD-N3-CD-N3-SPU RAL9006

**PROTECTION DEGREE**

| IP        | D <sub>4</sub> , D <sub>3</sub> , D <sub>2</sub> , D <sub>1</sub> |
|-----------|-------------------------------------------------------------------|
| <b>54</b> | threaded connection without additional sealing                    |
| <b>68</b> | threaded connection with additional sealing                       |