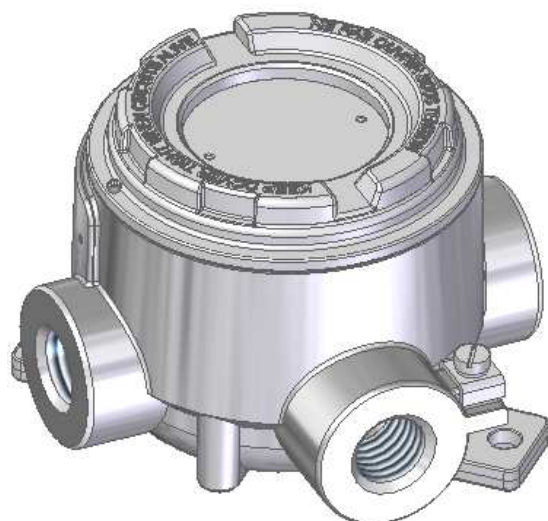
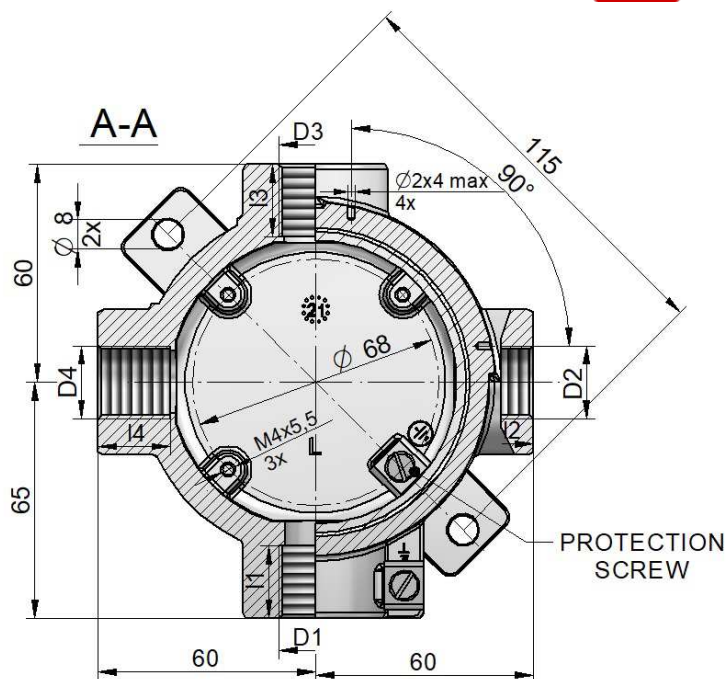
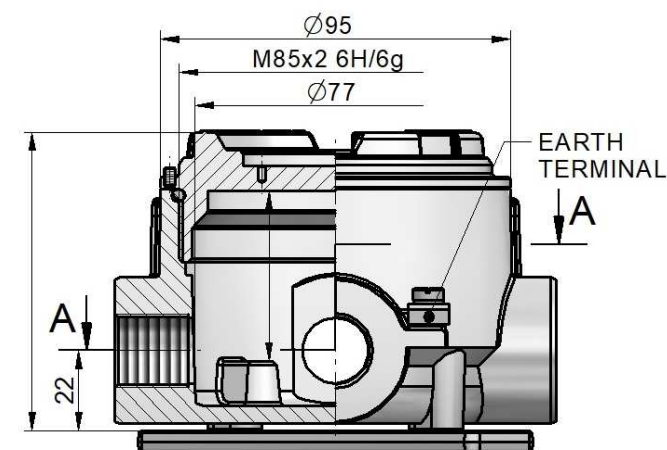
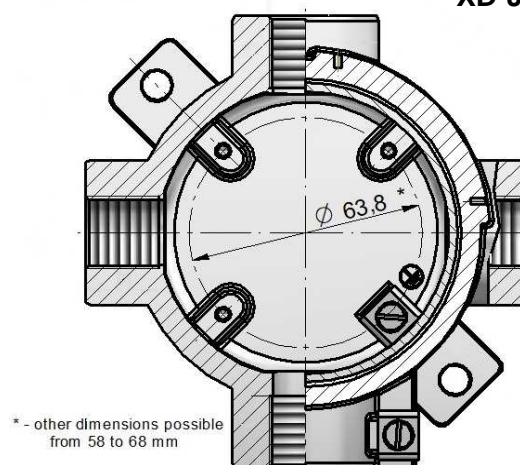


UNIVERSAL BOX – type XD-JB85



XD-JB85I



* - other dimensions possible
from 58 to 68 mm

Material of body and cover: aluminium pressure die-casting

Servis temperature: $T_{serv} = -40 \div 100^{\circ}\text{C}$ (85°C with window) – oil-proof TPE rubber

$T_{serv} = -40 \div 150^{\circ}\text{C}$ (85°C with window) – silicone VMQ rubber

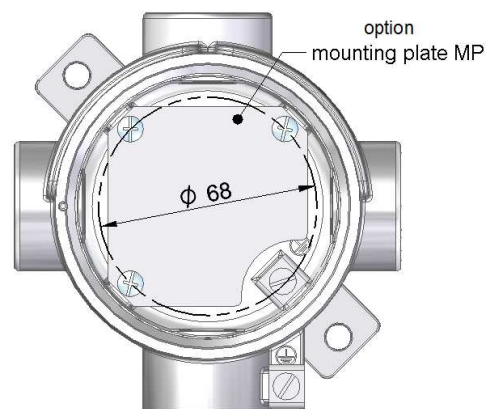
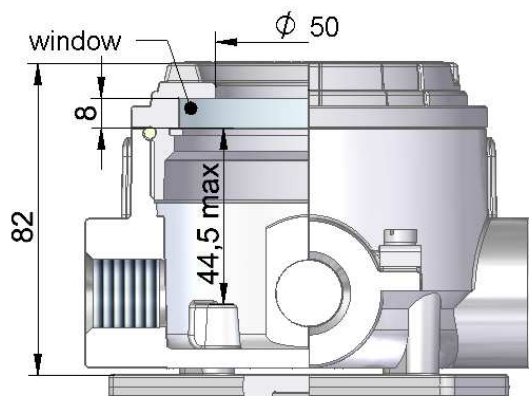
$T_{serv} = -20 \div 200^{\circ}\text{C}$ (85°C with window) – FKM rubber

Coating: chromating and chemically resistant paint (outside only)

THREAD D_4	l_4 [mm]	THREAD D_3	l_3 [mm]	THREAD D_2	l_2 [mm]	THREAD D_1	l_1 [mm]	SEAL MATERIAL	COATING
M20x1.5 M24x1.5 M25x1.5 M27x2	20	M20x1.5 M24x1.5 M25x1.5 M27x2	20	M20x1.5 M24x1.5 M25x1.5 M27x2	20	M20x1.5 M24x1.5 M25x1.5 M27x2	20	TPE VMQ FKM	SE Cal SPU P
½ NPTmod ¾ NPTmod	16,2	½ NPTmod ¾ NPTmod	16,2	½ NPTmod ¾ NPTmod	16,2	½ NPTmod ¾ NPTmod	16,2		
CD PD		CD PD		CD PD		CD PD			

PROTECTION CONCEPT

Type of protection		Permitted use	Certificate No.	Protection Principle
ATEX Marking	IECEx Marking			
1026 II 2G Ex db IIC Gb 1026 II 2D Ex tb IIIC Db	Ex db IIC Gb Ex tb IIIC Db	Zone 1, Zone 2 Zone 21, Zone 22	FTZU 05 ATEX 0262U IECEx FTZU 09.0028U	Contain the explosion and quench the flame

XD-JB85win**ORDERING**

XD-JB85. - - **../..** - **../..** - **../..** - **../..** - **..** **..** + **..**

Type of Box**Version of Box**

= standard
win = cover with window
l = holes spacing 58
lwin = holes spacing 58
 and cover with window

Symbol of seal material

0 = TPE rubber, without chromating 3 = TPE rubber
 4 = VMQ rubber 5 = FKM rubber

Symbol of tread $D_4 - D_3 - D_2 - D_1$

M2 = M20x1,5 N2 = ½ NPTmod – modified +1/2 to +1 thread deeper
 M24 = M24x1.5 N3 = ¾ NPTmod – modified +1/2 to +1 thread deeper
 M25 = M25x1.5 PD = plugged
 M27 = M27x2 CD = closed

Notice:

Type: "size of thread / PD" if thread is plugged, eg. **M2/PD**, **N3/PD**, etc.
 Type: "CD" if opening is closed, eg. **XD-JB85-4-CD-CD-M2....**, etc.

Symbol of paint type

SE – spray epoxy – standard; SPU – spray polyurethane (on se layer); C – creodur; P – polyester powder

Symbol of paint colour:

RAL 9006, RAL 5005, RAL 5015, RAL 7032, RAL 9002, RAL 9007, RAL 1007 RAL 1003, RAL 7035, RAL 9010
al = alu natural colour (for C paint type only)

Symbol of mounting plate (only for XD-JB85, XD-JB85win)

MP – mounting plate

Standard products:

XD-JB85-4-D₄-D₃-D₂-D₁-SE RAL9006

Sample:

XD-JB85-4-M2-M2-M2-M25-SE RAL9006

XD-JB85win-4-M2/PD-M2-M2-M25-SE RAL9006 + MP

XD-JB85win-5-CD-N3-CD-N3-SPU RAL9006

PROTECTION DEGREE

IP	D_4, D_3, D_2, D_1
54	threaded connection without additional sealing
68	threaded connection with additional sealing