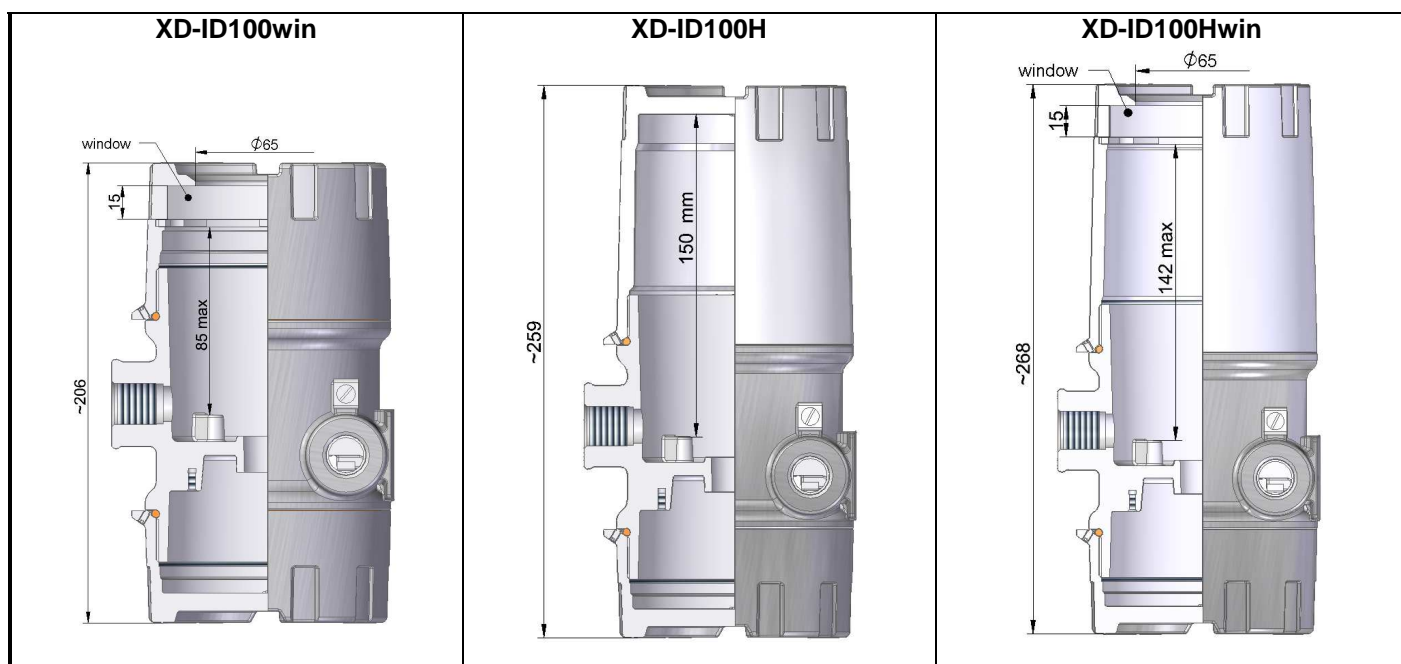
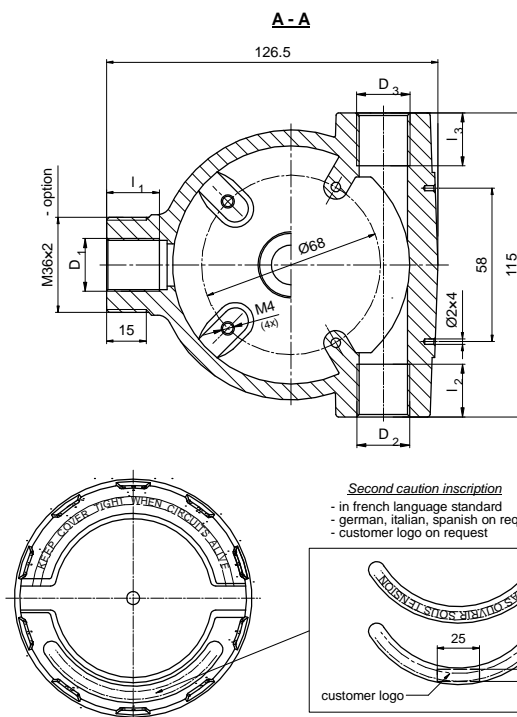
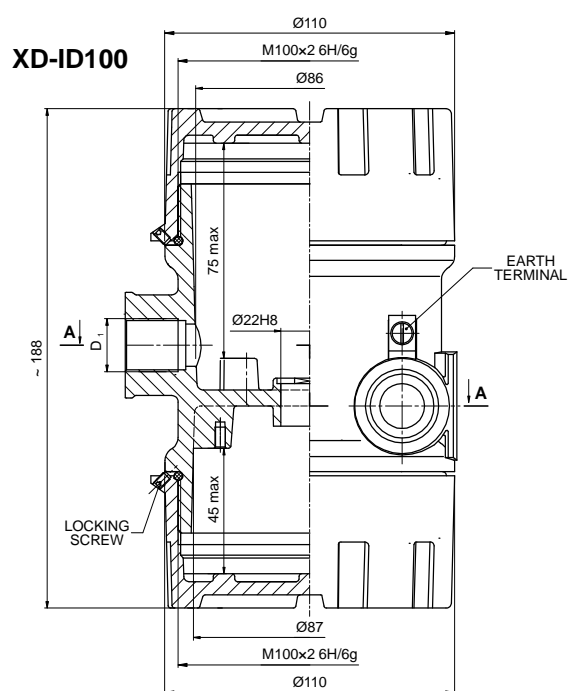


TWO-COMPARTMENTS INSTRUMENT HOUSING – type XD-ID100



Material of body and cover: aluminium pressure die-casting, max.0,5% Mg

Ambient temperature: $T_{amb} = -40 \div 100^{\circ}\text{C}$ (85°C with window) – silicone VMQ rubber

Coating: yellow chromating and chemically resistant paint (outside only)

THREAD D_3	l_2 [mm]	THREAD D_2	l_3 [mm]	THREAD D_1	l_1 [mm]	SEAL MATERIAL	COATING
M20x1.5 M24x1.5 M25x1.5	20	M20x1.5 M24x1.5 M25x1.5	20	M20x1.5 M24x1.5 M25x1.5 M27x2	20	S	SE
$\frac{1}{2}$ NPT mod $\frac{3}{4}$ NPT mod	19	$\frac{1}{2}$ NPT mod $\frac{3}{4}$ NPT mod	19	$\frac{1}{2}$ NPT mod $\frac{3}{4}$ NPT mod	19		Cal
PD		PD		PD			SPU

PROTECTION CONCEPT

Type of protection	Marking	Permitted use	Approval Body	Certificate No.	Protection Principle
Explosionproof ⁽¹⁾	Class I, Groups A,B,C,D Class II, Groups E,F,G; Class III Enclosure type: 4x	Division 1 Division 2	FM Approvals	FM17US0029U	Contain the explosion and quench the flame
Flameproof	Class I, Zone 1, AEx db IIC Gb, IP66 Ex db II C Gb, IP66	Zone 1, Zone 2	CSA	1823706	
Protection by enclosure	Zone 21, AEx tb IIIC Db, IP66 Ex tb IIIC Db. IP66	Zone 21, Zone 22			

⁽¹⁾ Only NPT threads for CSA Division, for all openings

ORDERING

XD-ID100... - .

- .. / ..

- .. / ..

- .. / .. / ..

- . ..

Type of instrument housing

Version of instrument housing

= standard
H = high cover
win = cover with window
Hwin = high cover with window

Material of seal

4 = VQM rubber

Symbol of conduit thread D₃ - D₂

Standard:

M2 = M20×1.5

N2 = ½ NPTmod – modified acc. to OIT-17/03

On request:

M24 = M24×1.5

M25 = M25×1.5

N3 = ¾ NPTmod – modified acc. to OIT-17/03

PD = plugged

Notice:

Type: "size of thread / PD" if thread is plugged, e.g. **M2/PD**, etc.

Symbol of process thread D₁

Standard:

M2 = M20×1.5

N2 = ½ NPTmod – modified acc. to OIT-17/03

N3 = ¾ NPTmod – modified acc. to OIT-17/03

On request:

M24 = M24×1.5

M25 = M25×1.5

M27 = M27×2

PD = plugged

Notice:

Type: "size of thread / PD" if thread is plugged ex. **M2/PD**, etc.

Outside thread on D₁ connector

M36 = M36×2 – non-flameproof male thread

Symbol of paint type

SE – spray epoxy – standard; SPU – spray polyurethane (on se layer); C – creodur

Symbol of paint colour

sh = RAL 9006 shine – standard; **yc** = RAL 1007 yellow chromic; **ys** = RAL 1003 yellow signalling; **bs** = RAL 5005 blue signalling;
sb = RAL 5015 sky-blue; **sg** = RAL 7032 silicon-grey; **gr** = RAL 7035 grey; **ag** = RAL 9002 ashen grey-white; **gs** = RAL 9007 grey-silver;
cw = RAL 9010 cream-white; **al** = alu natural colour (for C paint type only)

STANDARD PRODUCTS:

XD-ID100-4-D₃-D₂-D₁-SEsh

Sample: XD-ID100-4-M2-M2-M2-SEsh

XD-ID100win-4-D₃-D₂-D₁-SEsh

Sample: XD-ID100-4-N2-N2-N3/M36-SEsh

Threaded connection sealing	Protection against water and dust ingress	IP
Without sealing - standard accuracy class thread	NO	54
Use O-ring or a sealant, e.g. Loctite 577	YES	66