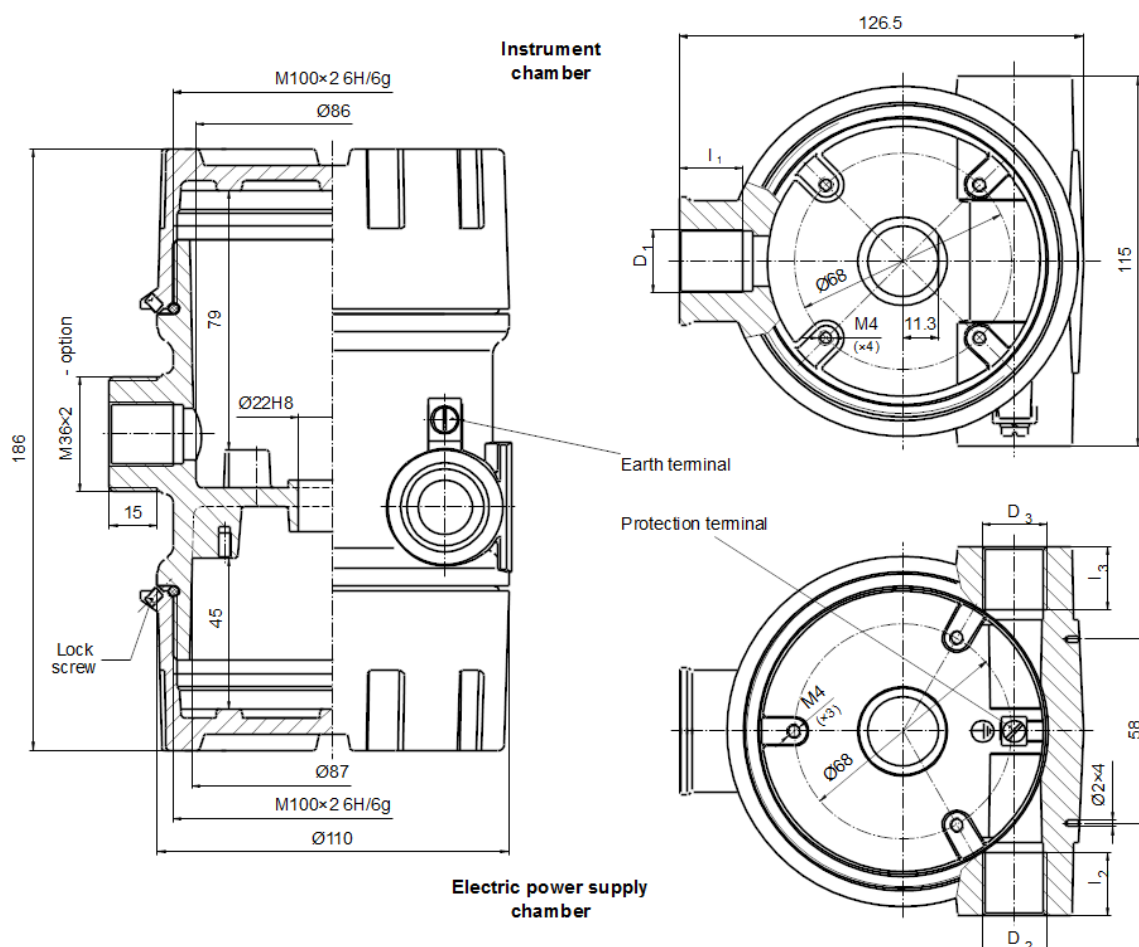


TWO-COMPARTMENTS INSTRUMENT HOUSING – type XD-ID100



Material of body and cover: aluminium pressure die-casting

Service temperature: $T_{serv} = -40 \div 100^{\circ}\text{C}$ (85°C with window) – silicone VMQ rubber

Coating: chromating and chemically resistant paint (outside only)

Sealing: Chromating and Chemically Resistant paint (outside only)							
THREAD D_3	l_2 [mm]	THREAD D_2	l_3 [mm]	THREAD D_1	l_1 [mm]	SEAL MATERIAL	COATING
M20x1.5 M24x1.5 M25x1.5	20	M20x1.5 M24x1.5 M25x1.5	20	M20x1.5 M24x1.5 M25x1.5 M27x2	20	4	SE SPU Cal
$\frac{1}{2}$ NPT _{mod} $\frac{3}{4}$ NPT _{mod}	16,2	$\frac{1}{2}$ NPT _{mod} $\frac{3}{4}$ NPT _{mod}	16,2	$\frac{1}{2}$ NPT _{mod} $\frac{3}{4}$ NPT _{mod}	16,2		
PD		PD		PD			

PROTECTION CONCEPT

Type of protection		Permitted use	Certificate No.	Protection Principe
ATEX Marking	IECEx Marking			
1026 II 2G Ex db IIC Gb	Ex db IIC Gb	Zone 1, Zone 2 Zone 21, Zone 22	FTZU 04 ATEX 0332U IECEx FTZU 10.0019U	Contain the explosion and quench the flame
1026 II 2D Ex tb IIIC Db	Ex tb IIIC Db			

ORDERING

XD-ID100... - . - .. / .. - .. / .. - .. / .. / .. - . ..

Type of instrument housing

Version of instrument housing

= standard
H = high cover
win10 = cover with window of thickness 10mm (use with bushing)
win15 = cover with window of thickness 15mm
Hwin = high cover with window

Material of seal

4 = VMQ rubber

Symbol of conduit thread $D_3 - D_2$

M2 = M20x1.5
M24 = M24x1.5
M25 = M25x1.5
N2 = ½ NPTmod – modified +1/2 to +1 thread deeper
N3 = ¾ NPTmod – modified +1/2 to +1 thread deeper
PD = plugged

Notice:

Type: "size of thread / PD" if thread is plugged, e.g. **M2/PD**, etc.

Symbol of process thread D_1

M2 = M20x1.5
M24 = M24x1.5
M25 = M25x1.5
M27 = M27x2
N2 = ½ NPTmod – modified +1/2 to +1 thread deeper
N3 = ¾ NPTmod – modified +1/2 to +1 thread deeper
PD = plugged

Notice:

Type: "size of thread / PD" if thread is plugged, e.g. **M2/PD**, etc.

Outside thread on D_1 connector

M36 = M36x2 – non-flameproof male thread

Symbol of paint type

SE – spray epoxy – standard; SPU – spray polyurethane (on SE layer); C – creodur

Symbol of paint colour

sh = RAL 9006 shine – standard; **yc** = RAL 1007 yellow chromic; **ys** = RAL 1003 yellow signalling; **bs** = RAL 5005 blue signalling;
sb = RAL 5015 sky-blue; **sg** = RAL 7032 silicon-grey; **gr** = RAL 7035 grey; **ag** = RAL 9002 ashen grey-white; **gs** = RAL 9007 grey-silver;
cw = RAL 9010 cream-white; **al** = alu natural colour (for C paint type only)

Standard products:

XD-ID100-4- D_3 - D_2 - D_1 -SEsh

Sample:

XD-ID100-4-M2-M2-M24-SEsh

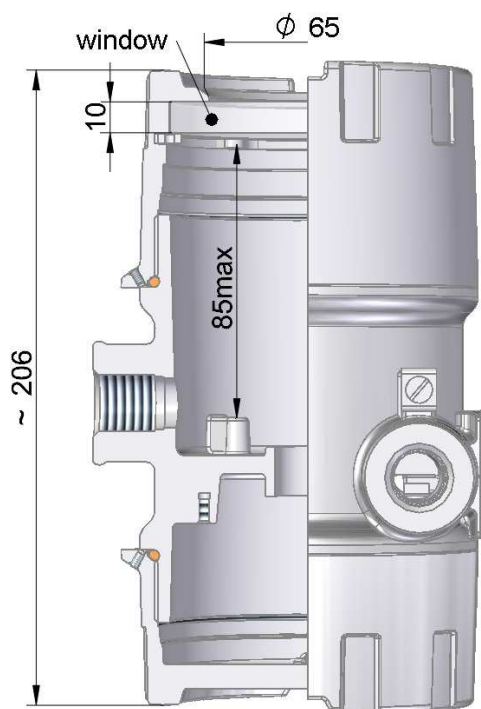
XD-ID100-4-M2-M2-M2/PD/M36-SEsh

XD-ID100win10-4-N3/PD-N3-N3-SEsh

PROTECTION DEGREE

PROTECTION DEGREE	
IP	D_3, D_2, D_1
54	threaded connection without additional sealing
68	threaded connection with additional sealing

for use with cable bushing



for use without cable bushing
as one-compartment housing

