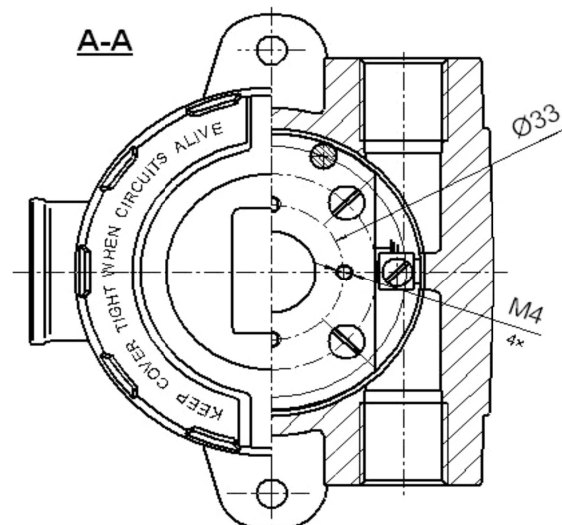
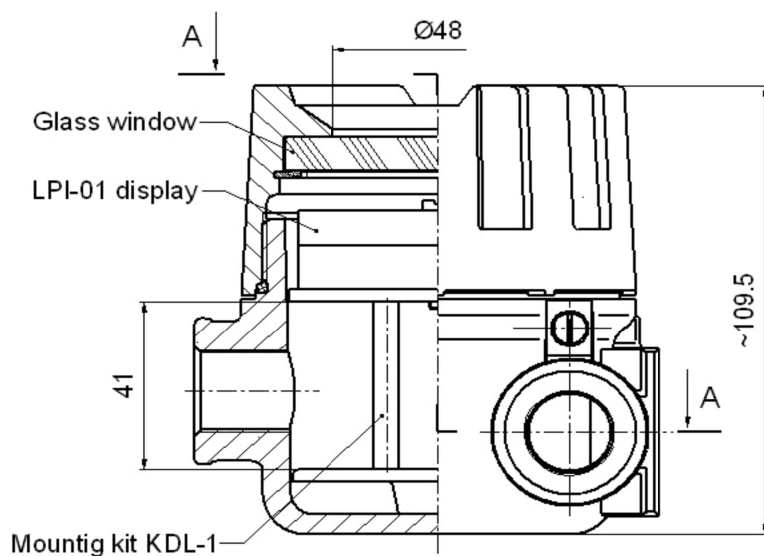


INSTRUMENT HOUSING with LPI-01 display– type XD-I80die



Material of body and cover: aluminium pressure die-casting, max.0,5% Mg Service temperature: $T_{serv} = -40 \div 85^{\circ}\text{C}$ Coating: yellow chromating and chemically resistant paint (outside only)					See data sheet: XD-I80 LPI-01 KDL-1 accessories		
THREAD D_3	l_3 [mm]	THREAD D_2	l_2 [mm]	THREAD D_1	l_1 [mm]	SEAL MATERIAL	COATING
M20x1.5 M24x1.5 M25x1.5	20	M20x1.5 M24x1.5 M25x1.5	20	M20x1.5 M24x1.5 M25x1.5 M27x2	20	3	SE
½ NPT mod ¾ NPT mod	16,2	½ NPT mod ¾ NPT mod	16,2	½ NPT mod ¾ NPT mod	16,2		Cal
PD		PD		PD			SPU

PROTECTION CONCEPT !ATTENTION! ONLY FOR EMPTY HOUSING

Protection method	Type of protection		Permitted use	Certificate No.	Protection Principle
	ATEX marking	IECEx marking			
Flameproof EN 60079-0 EN 60079-1 EN 60079-31 IEC 60079-0 IEC 60079-1 IEC 60079-31	1026 II2G Ex d IIC Gb 1026 II2D Ex tb IIIC Db	Ex d IIC Gb Ex tb IIIC Db	Zone 1, Zone 2 Zone 21, Zone 22	FTZU 04 ATEX 0265U IECEx FTZU 13.0026U	Contain the explosion and quench the flame
Max possible IP65					

Standard	Type of protection	Marking	Permitted use	Approval Body	Certificate No.	Protection Principle
FM 3615	Explosionproof	Class I, Groups A,B,C,D	Division 1	FM Approvals	3023004	Contain the explosion and quench the flame
CSA C22.2 No.30 ⁽¹⁾		Class II, Groups E,F,G; Class III	Division 2	CSA	1717515	
ANSI/ISA 12.22.01	Flameproof	Class I, Zone 1 AEx d II C, IP66	Zone 1	FM Approvals	3023004	
CSA E60079-1		Ex d II C, Class I, Zone 1, IP66		CSA	1717515	

⁽¹⁾ – for CSA Division, in all openings, NPT threads only

ORDERING

XD-I80die... - .

.. / ..

.. / ..

.. / ..

.. ..

Type of instrument housing

Material of seal

4 = silicone VQM rubber (-40...85°C)

Symbol of conduit thread D₃/D₂

Standard:

M2 = M20×1.5

N2 = ½ NPTmod – modified +1/2 to +1 deeper thread

N3 = ¾ NPTmod – modified +1/2 to +1 deeper thread

On request:

M24 = M24×1.5

M25 = M25×1.5

PD = plugged

Notice:

Type: "size of thread / PD" if thread is plugged, e.g. **M2/PD**, etc.

Symbol of process thread D₁

Standard:

M25 = M25×1.5

N3 = ¾ NPTmod – modified +1/2 to +1 deeper thread

N2 = ½ NPTmod – modified +1/2 to +1 deeper thread

On request:

M2 = M20×1.5

M24 = M24×1.5

M27 = M27×2

PD = plugged

Notice:

Type: "size of thread / PD" if thread is plugged ex. **M2/PD**, etc.

Symbol of paint type

SE – spray epoxy – standard; SPU – spray polyurethane (on SE layer); C – creodur;

Symbol of paint colour

sh = RAL 9006 shine – standard; **yc** = RAL 1007 yellow chromic; **ys** = RAL 1003 yellow signaling; **bs** = RAL 5005 blue signaling;

sb = RAL 5015 sky-blue; **sg** = RAL 7032 silicon-grey; **gr** = RAL 7035 grey; **ag** = RAL 9002 ashen grey-white;

gs = RAL 9007 grey-silver; **cw** = RAL 9010 cream-white; **al** = alu natural colour (for C paint type only)

STANDARD PRODUCTS:

XD-I80die-D₃-D₂-D₁-SEsh

Sample:

XD-I80die-M2-M2-M25-SEsh

PROTECTION DEGREE			
IP	D ₃	D ₂	D ₁
54	plugged – IP 68	plugged – IP 68	sensor connection – thread without sealing – IP 54
	cable gland IP66	cable gland IP66	
68	closed – IP 68	closed – IP 68	sensor connection – sealed thread – IP 68
	cable gland IP68	cable gland IP68	
For more details see technical information			

PROTECTION AGAINST WATER AND DUST INGRESS (Enclosure type NEMA 4x)			
	D ₃	D ₂	D ₁
NO	1.Parallel and taper thread are manufactured in the standard accuracy class of manufacturing. 2.No gasket, no packing with any packing agent.		
YES	Threads are additionally packed with use of – for example – LOCTITE 577 agent.		
For more details see technical information			