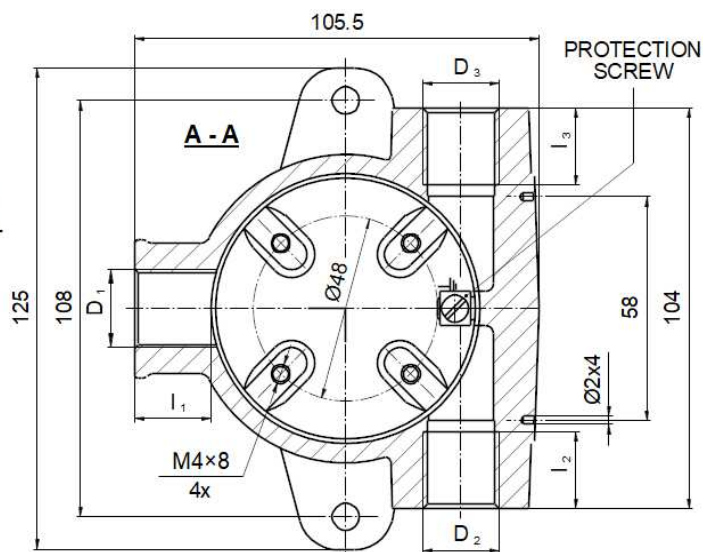
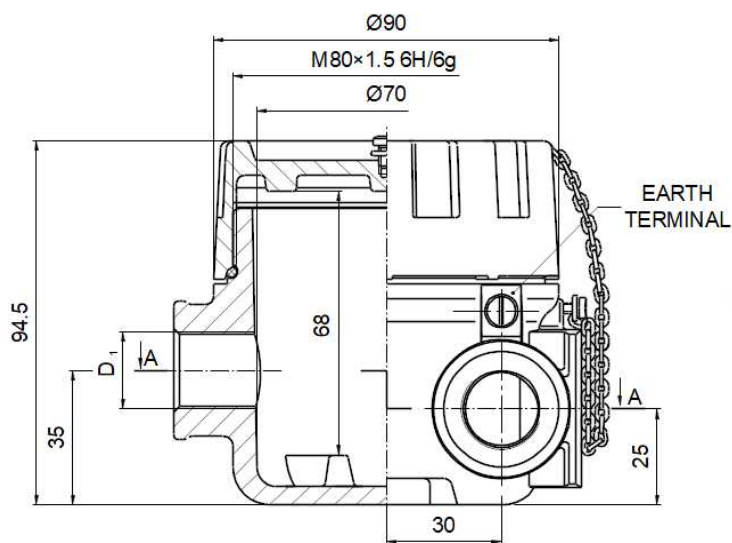
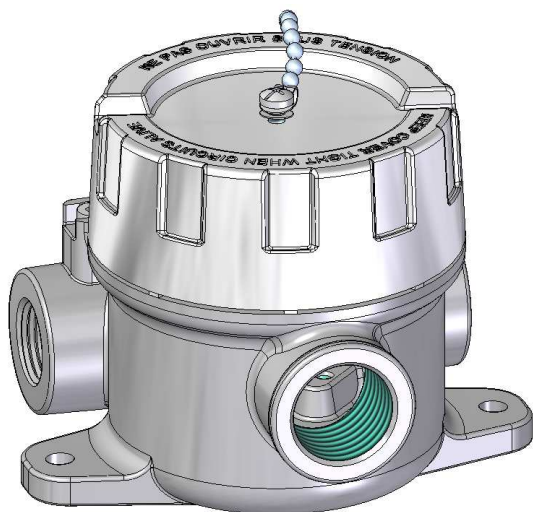


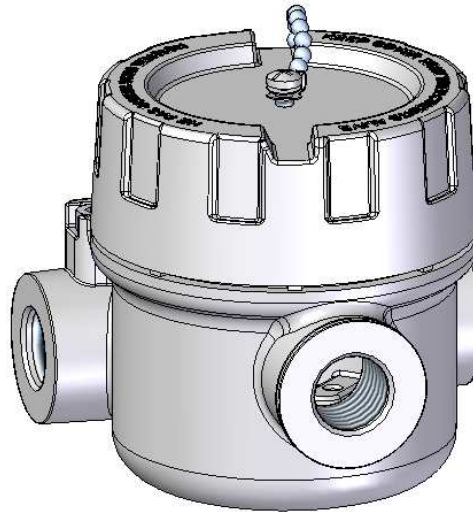
TWO-COMPARTMENTS INSTRUMENT HOUSING – type XD-I80



XD-I80



XD-I80C



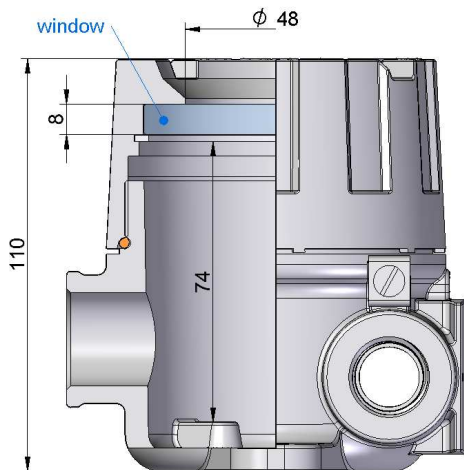
Material of body and cover: aluminium pressure die-casting
Service temperature: $T_{serv} = -40 \div 100^{\circ}\text{C}$ (85°C with window) – silicone VMQ rubber
Coating: chromating and chemically resistant paint (outside only)

THREAD D_3	l_2 [mm]	THREAD D_2	l_3 [mm]	THREAD D_1	l_1 [mm]	SEAL MATERIAL	COATING
M20x1.5 M24x1.5 M25x1.5	20	M20x1.5 M24x1.5 M25x1.5	20	M20x1.5 M24x1.5 M25x1.5 M27x2	20	4	SE
½ NPT _{mod} ¾ NPT _{mod}	16,2	½ NPT _{mod} ¾ NPT _{mod}	16,2	½ NPT _{mod} ¾ NPT _{mod}	16,2		SPU Cal
PD		PD		PD			

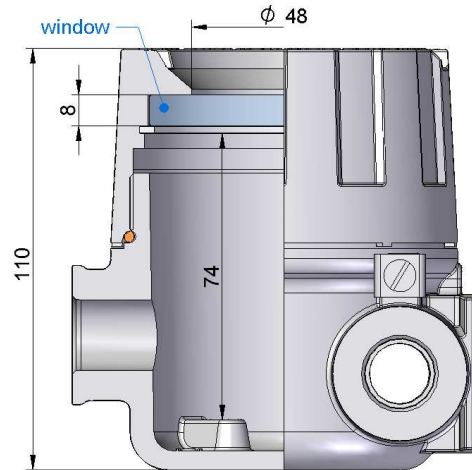
PROTECTION METHODS

Type of protection		Permitted use	Certificate No.	Protection Principe
ATEX Marking	IECEx Marking			
1026 II 2G Ex db IIC Gb	Ex db IIC Gb	Zone 1, Zone 2 Zone 21, Zone 22	FTZU 04 ATEX 0265U IECEx FTZU 13.0026U	Contain the explosion and quench the flame
1026 II 2D Ex tb IIIC Db	Ex tb IIIC Db			

XD-I80win



XD-I80Cwin



ORDERING

XD-I80... - . - .. / .. - .. / .. - .. / .. - . ..

Type of instrument housing

Version of instrument housing

= standard
win = cover with window
C = without lugs
Cwin = without lugs and cover with window

Material of seal

4 = VMQ rubber

Symbol of conduit thread $D_3 - D_2$

M2 = M20x1.5
 M24 = M24x1.5
 M25 = M25x1.5
 N2 = 1/2 NPTmod – modified +1/2 to +1 thread deeper
 N3 = 3/4 NPTmod – modified +1/2 to +1 thread deeper
 PD = plugged

Notice:

Type: "size of thread / PD" if thread is plugged, e.g. **M2/PD**, etc.

Symbol of process thread D_1

M2 = M20x1.5
 M24 = M24x1.5
 M25 = M25x1.5
 M27 = M27x2
 N2 = 1/2 NPTmod – modified +1/2 to +1 thread deeper
 N3 = 3/4 NPTmod – modified +1/2 to +1 thread deeper
 PD = plugged

Notice:

Type: "size of thread / PD" if thread is plugged, e.g. **M2/PD**, etc.

Symbol of paint type

SE – spray epoxy – standard; SPU – spray polyurethane (on SE layer); C – creodur

Paint colour

RAL 9006, RAL 5005, RAL 5015, RAL 7032, RAL 9002,
 RAL 9007, RAL 1007 RAL 1003, RAL 7035, RAL 9010
 al = alu natural colour (for C paint type only)

Standard products:

XD-I80-4-D₃-D₂-D₁-SE

Sample:

XD-I80-4-M2-M2-M25-SE RAL 9006

XD-I80win-4-N3/PD-N3-N3-SE RAL 5005

PROTECTION DEGREE

IP	D ₃ , D ₂ , D ₁
54	threaded connection without additional sealing
68	threaded connection with additional sealing