

INSTRUMENT HOUSING – type XD-I80C

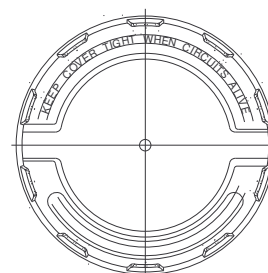
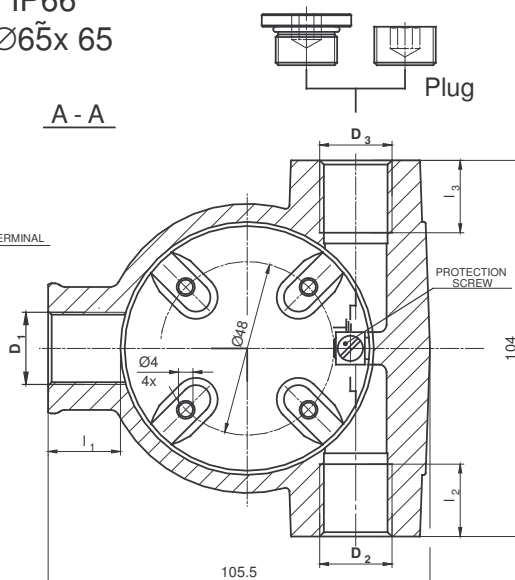
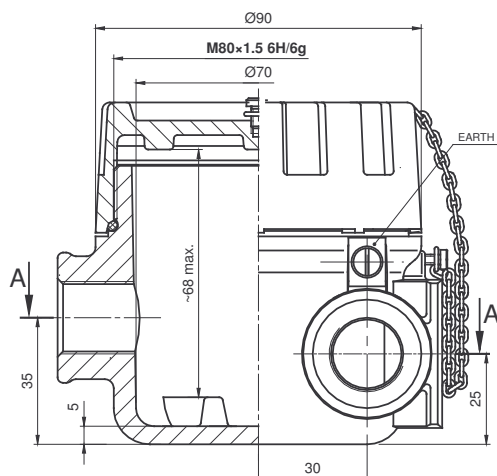
Material of body and cover: aluminium pressure die-casting, max.0,5% Mg

Ambient temperature: $T_{amb} = -40$ to 212°F (-40 to 100°C) – silicone rubber

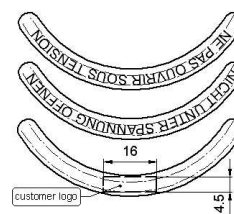
Coating: yellow chromating and chemically resistant paint (outside only)

Enclosure classification: Type 4X, IP66

Maximum space for transmitter: $\varnothing 65 \times 65$



Cover – top view



Second caution inscription

STANDARD PRODUCT									
CONDUIT				PROCESS		SEAL MATERIAL	COATING**	SECOND CAUTION INSCRIPTION	ORDERING EXAMPLE
THREAD		THREAD		THREAD					
D_3	I_2 [mm]	D_2	I_3 [mm]	D_1	I_1 [mm]				
M20x1.5 6H	20	M20x1.5 6H	20	M20x1.5 6H M24x1,5 6H M25x1.5 6H M27x2 6H	20	S	SEsh	in French language	XD-I80C-2–M2–M2– M25-SEsh
				½ NPT mod* ¾ NPT mod*	~13 (7 full thds)				
OPTIONS ON REQUEST									
M24x1,5 6H M25x1.5 6H	20	M24x1,5 6H M25x1.5 6H	20	PD - plugged	X	X	SE..	free language: German, Italian, Spanish, etc. or customer logo acc. to order	to fixing depend on chosen combination
½ NPT mod* ¾ NPT mod*	~13 (7 full thds)	½ NPT mod* ¾ NPT mod*	~13 (7 full thds)				Cal		
PD - plugged		PD - plugged					SPU..		

* „mod” = thread modified acc. to FM 3615 and CSA C22.2 No. 30

** body and cover

PROTECTION CONCEPT

Standard	Type of protection	Marking	Permitted use	Approval Body	Certificate No.	Protection Principle
FM 3615	Explosionproof	Class I, Groups A,B,C,D	Division 1	FM Approvals	3019264	Contain the explosion and quench the flame
CSA C22.2 No.30 ⁽¹⁾		Class II, Groups E,F,G; Class III Enclosure type: 4x	Division 2	CSA	1717515	
ANSI/ISA 12.22.01	Flameproof	Class I, Zone 1 AEx d II C, IP66	Zone 1	FM Approvals	3023004	
CSA E60079-1		Ex d II C, Class I, Zone 1, IP66		CSA	1717515	

⁽¹⁾ – for CSA Division, in all openings, NPT threads only

ORDERING

XD - I80C-	.	-	<div style="border: 1px solid black; padding: 2px; display: inline-block;"> .. / .. </div>	-	<div style="border: 1px solid black; padding: 2px; display: inline-block;"> .. / .. </div>	-	<div style="border: 1px solid black; padding: 2px; display: inline-block;"> .. / .. </div>	-	<div style="border: 1px solid black; padding: 2px; display: inline-block;"> . .. </div>
<div style="border: 1px solid black; padding: 5px;"> TYPE OF INSTRUMENT HOUSING </div>									
<div style="border: 1px solid black; padding: 5px;"> SYMBOL OF ELEMENTS / SEALS MATERIAL 2 = M+S 4 = N+S </div>									
<div style="border: 1px solid black; padding: 5px;"> SYMBOL OF CONDUIT THREAD D₃ - D₂ M2 = M20x1,5 6H M24 = M24x1.5 6H M25 = M25x1.5 6H N2 = ½ NPTmod – modified ac. to FM3615 and CSA C22.2 No. 0.5 N3 = ¾ NPTmod – modified ac. to FM3615 and CSA C22.2 No. 0.5 PD = plugged Notice: Type: "size of thread / PD" if thread is plugged ex. M2/PD,etc. </div>									
<div style="border: 1px solid black; padding: 5px;"> SYMBOL OF PROCESS THREAD D₁ M2 = M20x1,5 6H M24 = M24x1.5 6H M25 = M25x1.5 6H M27 = M27x2 6H N2 = ½NPTmod – modified ac. to FM3615 and CSA C22.2 No. 0.5 N3 = ¾NPTmod – modified ac. to FM3615 and CSA C22.2 No. 0.5 PD = plugged Notice: Type: "size of thread / PD" if thread is plugged ex. M2/PD,etc. </div>									
<div style="border: 1px solid black; padding: 5px;"> SYMBOL OF PAINT TYPE: C – CREODUR; SE – SPRAY EPOXY; SPU – SPRAY POLIURETHANE </div>									
<div style="border: 1px solid black; padding: 5px;"> SYMBOL OF PAINT COLOUR : al = alu natural colour; yc = RAL 1007 – yellow–chromic; ys = RAL 1003 – yellow–signalling; bs = RAL 5005 blue signalling; sb = RAL 5015 sky-blue; sg = RAL 7032 silicon–grey; gr = RAL 7035 grey; ag = RAL 9002 ashen grey-white; sh =RAL 9006 shine; gs = RAL 9007 grey–silver; cw = RAL 9010 cream-white (for more details see technical information) </div>									

SAMPLE:

STANDARD: XD-I80C-2-M2-M2-M2-SEsh

ON REQUEST:

- 1.) XD-I80C-2-N3/PD-M2/PD-M25/PD-SEsb
- 2.) XD-I80C-4-N2-N2/PD-N3-SEsb

PROTECTION AGAINST WATER AND DUST INGRESS (Enclosure type NEMA 4x)			
	D ₃	D ₂	D ₁
NO	1.Parallel and taper thread are manufactured in the standard accuracy class of manufacturing. 2.No gasket, no packing with any packing agent.		
YES	Threads are additionally packed with use of – for example – LOCTITE 577 agent.		
For more details see technical information			