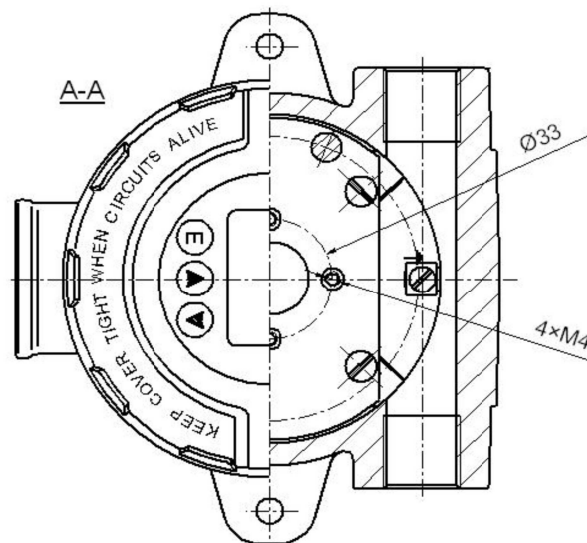
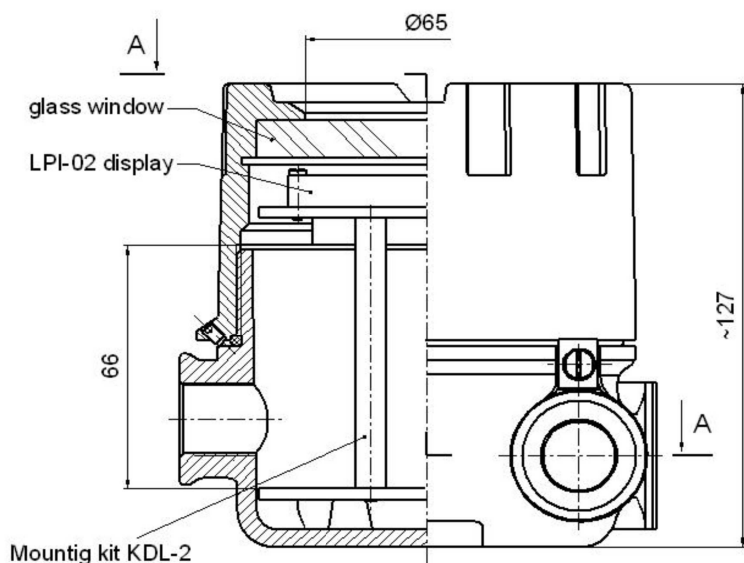


INSTRUMENT HOUSING with LPI-02 display – type XD-Idig



Material of body and cover: aluminium pressure die-casting, max.0,5% Mg

Service temperature: $T_{serv} = -20 \div 70^{\circ}\text{C}$

Coating: yellow chromating and chemically resistant paint (outside only)

See data sheet:



XD-I

LPI-02

KDL-2 accessories

THREAD D_3	l_3 [mm]	THREAD D_2	l_2 [mm]	THREAD D_1	l_1 [mm]	SEAL MATERIAL	COATING
M20x1.5 M24x1.5 M25x1.5	20	M20x1.5 M24x1.5 M25x1.5	20	M20x1.5 M24x1.5 M25x1.5 M27x2	20	3	SE
$\frac{1}{2}$ NPT mod $\frac{3}{4}$ NPT mod	16,2	$\frac{1}{2}$ NPT mod $\frac{3}{4}$ NPT mod	16,2	$\frac{1}{2}$ NPT mod $\frac{3}{4}$ NPT mod	16,2	4	Cal
PD		PD		PD		5	SPU

PROTECTION CONCEPT !ATTENTION! ONLY FOR EMPTY HOUSING

Protection method	Type of protection		Permitted use	Certificate No.	Protection Principe
	ATEX marking	IECEx marking			
Flameproof EN 60079-0 EN 60079-1 EN 60079-31 IEC60079-0 IEC60079-1 IEC60079-31	1026  II2G Ex d IIC Gb 1026  II2D Ex tb IIIC Db	Ex d IIC Gb Ex tb IIIC Db	Zone 1, Zone 2 Zone 21, Zone 22	FTZU 03 ATEX 0207U IECEx FTZU 12.0017U	Contain the explosion and quench the flame

Protection method	Type of protection	Marking	Permitted use	Approval Body	Certificate No.	Protection Principe
FM 3615	Explosionproof	Class I, Groups A,B,C,D Class II, Groups E,F,G; Class III Enclosure type: 4x	Division 1	FM Approvals	3019264	Contain the explosion and quench the flame
CSA C22.2 No.30 ⁽¹⁾			Division 2	CSA	1717515	
ANSI/ISA 60079-1	Flameproof	Class I, Zone 1, AEx d II C, IP66 Ex d II C, Class I, Zone 1, IP66	Zone 1	FM Approvals	3023004	
CAN/CSA E60079-1				CSA	1717515	

⁽¹⁾ for CSA Division NPT threads only, in all openings

ORDERING

XD-Idig -. - .. / .. - .. / .. - .. / .. - . ..	
Type of instrument housing	
Material of seal 3 = TPE rubber 4 = VQM rubber 5 = FKM rubber	
Symbol of conduit thread D₃ - D₂ <u>Standard:</u> M2 = M20×1.5 N2 = ½ NPTmod – modified +1/2 to +1 deeper thread N3 = ¾ NPTmod – modified +1/2 to +1 deeper thread <u>Notice:</u> Type: "size of thread / PD" if thread is plugged, e.g. M2/PD , etc.	<u>On request:</u> M24 = M24×1.5 M25 = M25×1.5 PD = plugged
Symbol of process thread D₁ <u>Standard:</u> M25 = M25×1.5 N3 = ¾ NPTmod – modified +1/2 to +1 deeper thread N2 = ½ NPTmod – modified +1/2 to +1 deeper thread <u>Notice:</u> Type: "size of thread / PD" if thread is plugged ex. M2/PD , etc.	<u>On request:</u> M2 = M20×1.5 M24 = M24×1.5 M27 = M27×2 PD = plugged
Symbol of paint type SE – spray epoxy – <u>standard</u> ; SPU – spray polyurethane (on se layer); C – creodur	
Symbol of paint colour sh = RAL 9006 shine – <u>standard</u> ; yc = RAL 1007 yellow chromic; ys = RAL 1003 yellow signaling; bs = RAL 5005 blue signaling; sb = RAL 5015 sky-blue; sg = RAL 7032 silicon-grey; gr = RAL 7035 grey; ag = RAL 9002 ashen grey-white; gs = RAL 9007 grey-silver; cw = RAL 9010 cream-white; al = alu natural colour (for C paint type only)	

STANDARD PRODUCTS:

XD-Idig-D₃-D₂-D₁-SEsh

Sample:

XD-Idig-M2-M2-M25-SEsh

PROTECTION DEGREE			
IP	D ₃	D ₂	D ₁
54	plugged – IP 68	plugged – IP 68	sensor connection – thread without sealing – IP 54
	cable gland IP66	cable gland IP66	
68	closed – IP 68	closed – IP 68	sensor connection – sealed thread – IP 68
	cable gland IP68	cable gland IP68	
For more details see technical information			

PROTECTION AGAINST WATER and DUST INGRESS (Enclosure Type NEMA 4X)			
IP	D ₃	D ₂	D ₁
NO	1.Parallel and taper thread are manufactured in the standard accuracy class of manufacturing. 2.No gasket, no packing with any packing agent.		
YES	Threads are additionally packed with use of, e.g., LOCTITE 577 agent.		