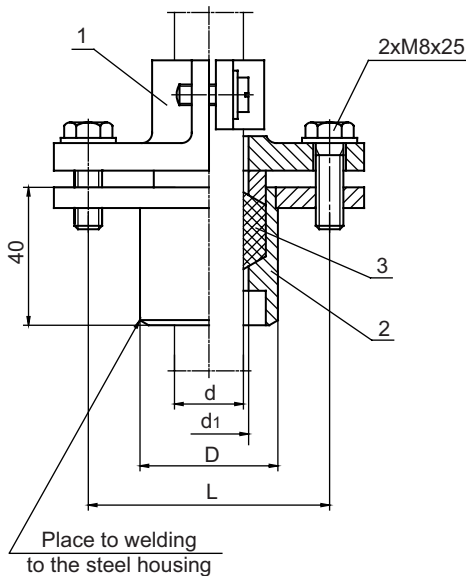


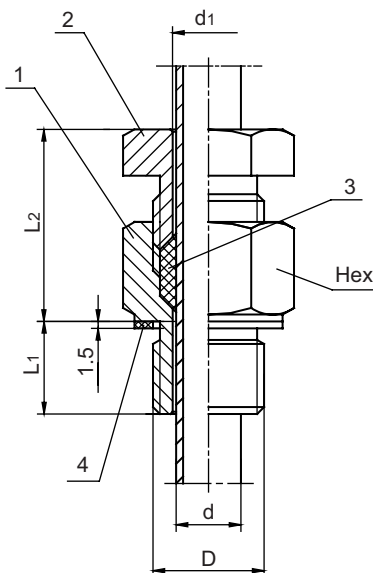
Type	Diameter of clamping pipe d [mm]	Dimensions [mm]		
		d <sub>1</sub>	D	L
UZ 21 – 15	Ø15	16	27	55
UZ 21 – 22	Ø22	23	33	70
UZ 21 – 26-29	Ø26+Ø29	29	39	70
UZ 21 - 32	Ø32	33	39	70
Material	cast steel, black powder lacquer coating			
Max temp.	300°C			
Gas tightness	non tightness			
<b>Ordering sample:</b> Mounting bracket UZ 21 – 22				

## MOUNTING BRACKET FOR WELDING type UZ 11



Type	Diameter of clamping pipe d [mm]	Dimension [mm]		
		d <sub>1</sub>	D	L
UZ 11 – 15	Ø15	16	35	55
UZ 11 – 22	Ø22	23	40	70
UZ 11 – 32	Ø32	33	50	70
Materials	1. Cast steel, black powder lacquer coating. 2. Steel 1.0401, black powder lacquer coating. 3. Ceramic packing cord.			
Max temp.	300°C			
Gas tightness	to 1 bar (300°C)			
<b>Ordering sample:</b> Mounting bracket UZ 11 – 15				

## COMPRESSION FITTING type UG 1



Type	Diameter of sheath d [mm]	Type of thread D	Dimensions [mm]			
			d <sub>1</sub>	Hex	L <sub>1</sub>	L <sub>2</sub>
UG 1 – 6	Ø6	M16×1.5	Ø6.5	22	16	~ 32
		M18×1.5		27	20	
		G½				
UG 1 – 8	Ø8	M16×1.5	Ø8.5	22	16	
UG 1 – 12	Ø12	M20×1.5	Ø12.5	27	20	~ 34
		G¾		32		
UG 1 – 15	Ø15	M24×1.5	Ø15.5	32	20	~ 35
		G½		41	25	
		G1				
UG 1 – 20	Ø20	M30×2	Ø20.5	41	25	~ 42
UG 1 – 22	Ø22	G1	Ø22.5			
Materials of elements		1. Steel 1.0715 zinc-plated. 2. Steel 1.0715 zinc-plated. 3. Ceramic packing cord. 4. BELPA (non asbestos)				
Max temperature		300°C				
Gas tightness		to 1 bar				
<b>Ordering sample:</b> Compression fitting UG1 – 15 – M24×1.5						